

Nubia Treasures of Ancient Sudan



Museum of Fine Arts Boston



20.276 Winged Isis pectoral, Nubian, Napatan Period, reign of Amaninatakelepte, 538–519 BC. Gold. 6.9 x 17 cm. Harvard University—Boston Museum of Fine Arts Expedition.

Nubia: Treasures of Ancient Sudan

Curator Denise Doxey
Curator, Ancient Egyptian, Nubian, and Near Eastern Art
Museum of Fine Arts, Boston

Number of objects Approximately 350

Contact Traveling Exhibitions
Phone: 617-369-3201
E-mail: travelingexhibitions@mfa.org
Web: mfa.org/travelingexhibitions

Nubia: Treasures of Ancient Sudan



21.321 Hathor-headed crystal pendant, Nubian, Napatan Period, reign of Piankhy (Piye), 743–712 BC. Gold, rock crystal. 5.3 x 3.3 cm. Harvard University—Boston Museum of Fine Arts Expedition.

Although frequently eclipsed in the public imagination by its northern neighbor Egypt, ancient Nubia has a long and glorious past. There, in what is today Sudan, a series of civilizations flourished for more than 6,000 years. Nubia's location made it a strategic link between Central and Eastern Africa, Egypt, Western Asia, and the Mediterranean. The artistic achievements of the Nubians include fine ceramics, exquisite jewelry and decorative arts, impressive buildings, stone sculpture and relief, and pyramid tombs.

The Harvard University–Boston Museum of Fine Arts Expedition excavated in Sudan for some three decades in the early 20th century and was instrumental in discovering the existence of ancient Nubian civilization. As a result, the MFA houses the largest and finest Nubian collection outside Khartoum. The exhibition presents highlights of the collection, many of which have never before left Boston. The Museum of Fine Arts, Boston, has designed the exhibition to be modular, offering the exhibition in its entirety and in various forms. Publications on the excavation and highlights of the MFA's Nubian holdings will accompany the exhibition. (June and July 2018)

Final object checklist pending approval.

Nubia: Treasures of Ancient Sudan



20.225 Shawabty of King Taharqa, Nubian, Napatan Period, reign of Taharqa, 690–664 BC. Gray serpentinite. 34.2 x 12.5 cm. Harvard University—Boston Museum of Fine Arts Expedition.

Nubia: Treasures of Ancient Sudan



20.2006 Rilled beaker, Nubian, Classic Kerma, about 1700–1550 BC. Pottery. 24 x 14 cm. Harvard University—Boston Museum of Fine Arts Expedition.

Nubia: Treasures of Ancient Sudan



24.959 Hanging lamp, Nubian, Meroitic Period, reign of Takideamani, AD 140–55. Bronze. 62 x 12.5 x 39.7 cm.
Harvard University—Boston Museum of Fine Arts Expedition.

Nubia: Treasures of Ancient Sudan



21.2633 Sphinx, Nubian, Meroitic Period, AD 1st–4th century. Black granodiorite. 22.8 x 12.1 x 30.8 cm. Harvard University—Boston Museum of Fine Arts Expedition.

Nubia: Treasures of Ancient Sudan



21.2815 Leg from a funerary bed, Nubian, Napatan Period, reign of Shebitka, 698–690 BC. Bronze. 56.1 x 13 x 30.5 cm.
Harvard University—Boston Museum of Fine Arts Expedition.

Nubia: Treasures of Ancient Sudan



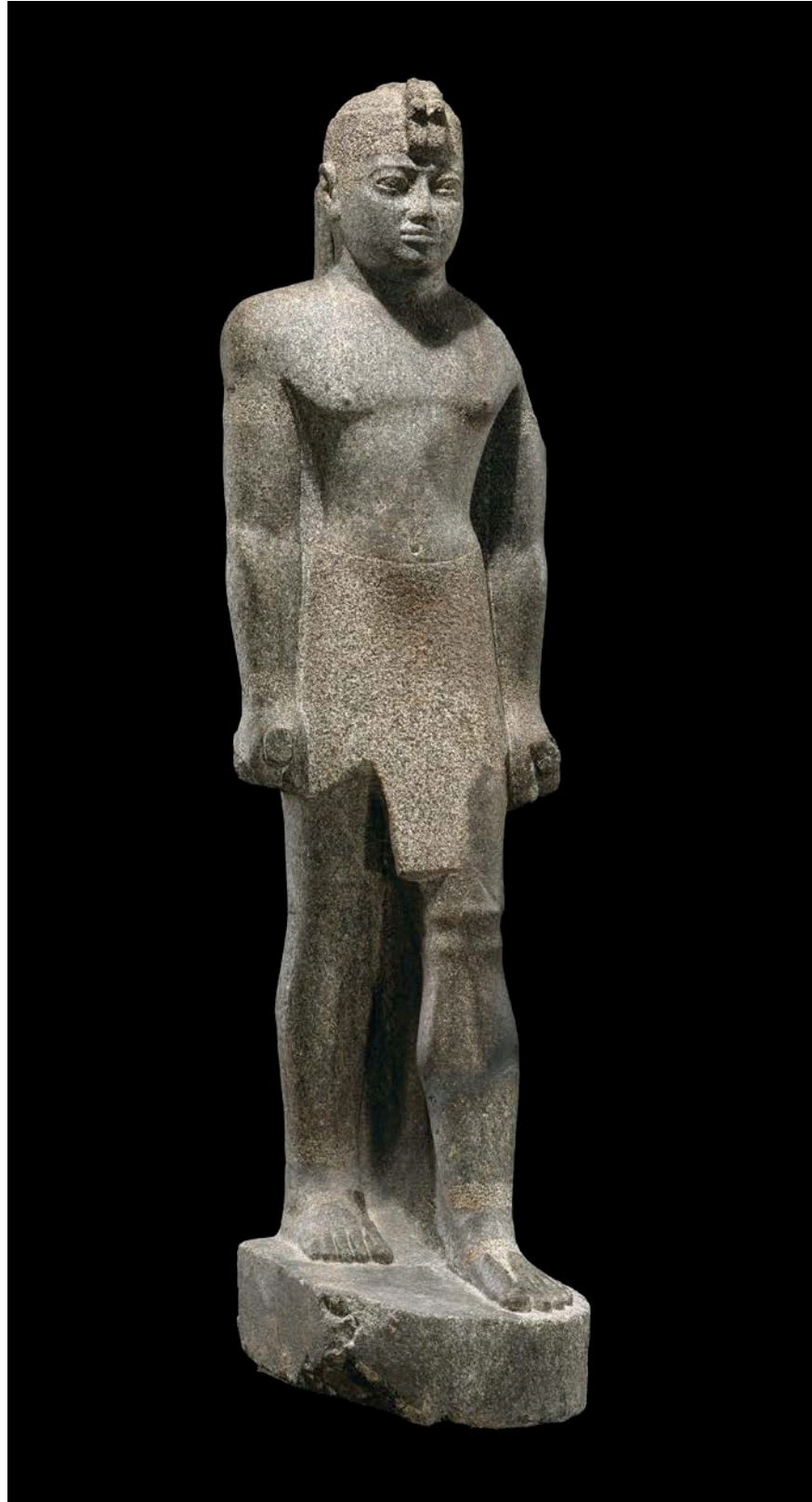
21.3238 Offering table of King Piankhy (Piye), Nubian, Napatan Period, reign of Piankhy (Piye), 747–716 BC. Gilded bronze. 82 x 45.5 cm. Harvard University—Boston Museum of Fine Arts Expedition.

Nubia: Treasures of Ancient Sudan



23.366 Necklace with human and ram's head pendants, Nubian, Meroitic Period, 270–250 BC. Gold and carnelian. 38 x 2.4 cm. Harvard University—Boston Museum of Fine Arts Expedition.

Nubia: Treasures of Ancient Sudan



23.731 Statue of King Senkamanisken, Nubian, Napatan Period, reign of Senkamanisken, 643–623 BC. Granite gneiss. 147.8 x 50.1 cm. Harvard University—Boston Museum of Fine Arts Expedition.

Nubia: Treasures of Ancient Sudan



24.879 Vessel in the shape of a bound oryx, Nubian, Napatan Period, early 7th century BC. Travertine (Egyptian alabaster). 17.14 cm. Harvard University—Boston Museum of Fine Arts Expedition.

All images copyright Museum of Fine Arts, Boston, unless otherwise noted.
© 2018 Museum of Fine Arts, Boston
Final object checklist pending approval.

Traveling Exhibitions

Contact us Phone: 617-369-3201
E-mail: travelingexhibitions@mfa.org
Web: mfa.org/travelingexhibitions



Museum of Fine Arts Boston